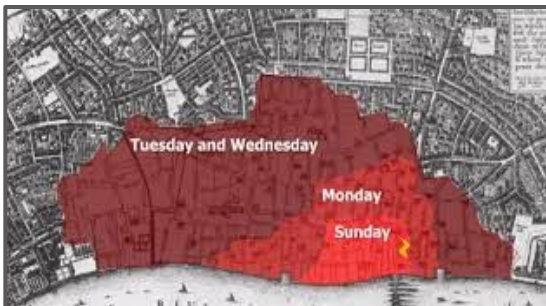
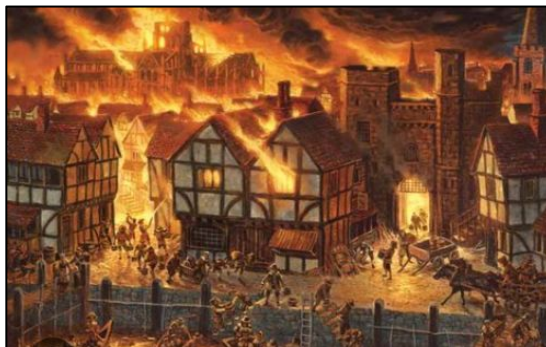


Key Question: Was London always a cool place?

Why was the Great Fire of London so catastrophic?

Historical Vocabulary

bakery	a place where bread or cakes are made and sold
London	the capital city of England and the United Kingdom
artefacts	an important man-made historical object
diary	a personal record of life's events
eye-witness	a person who has seen something and can give a description
embers	small pieces of glowing coal or wood in a dying fire
flammable	something that burns easily



In this topic, **we are learning to:**

- explore events beyond living memory that are significant nationally.
- explore significant historical events, people and places in their own locality.
- develop an understanding of how the past impacts our lives today.
- understand primary and secondary resources.

Timeline

Sunday 2nd September 1666

A fire starts in Thomas Farriner's bakery on Pudding Lane, as news of the fire spreads, people run to escape its path.

Monday 3rd September 1666

Firefighters try to tackle the fire but it spreads quickly. People carry their possessions to safety using a horse and cart or boats on the River Thames.

Tuesday 4th September 1666

Houses are pulled down in an attempt to stop the fire spreading. St Paul's Cathedral is destroyed.

Wednesday 5th September 1666

The fire starts to burn more slowly as the wind dies down.

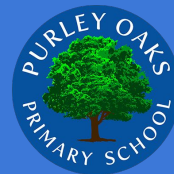
Thursday 6th September 1666

The fire is finally under control and put out. People are left homeless.

6 questions you will know the answers to...

When did the GFOL happen ?
Why did the fire start?
How did the fire spread?

How did the fire stop?
How do we know about the fire?
What are the outcomes from the GFoL?



Assessment Focus:

Chronology

- Use a range of appropriate words and phrases to describe the past.
- Sequence a set of events in chronological order and give reasons for their order.

Knowledge and Interpretation

- Recount some interesting facts from an historical event, such as where the 'Fire of London' started.

Enquiry

- Research about a famous event that happened in Britain and why it happened.
- Explain how the Great Fire of London has impacted on our lives today.