

Prior learning:

Year 1

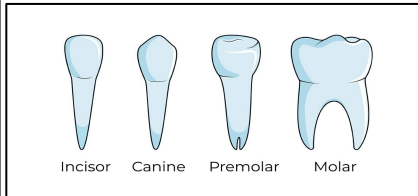
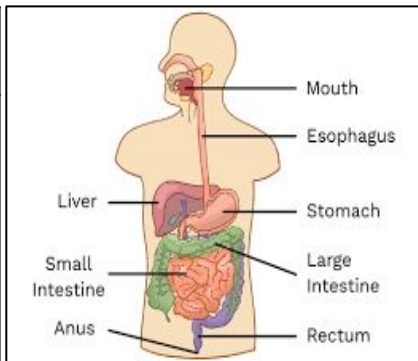
- Identify and name a variety of common animals that are carnivores, herbivores and omnivores.

Year 2

- Find out about and describe the basic needs of animals
- Describe the importance for human of exercise, eating the right amounts of different types of food, and hygiene.

Year 3

- Identify that animals, including humans, need the right types and amount of nutrition, and that they cannot make their own food; they get nutrition from what they eat



Key Vocabulary:

Digestive system

The digestive system is a long, twisting tube that starts at the mouth and goes through the oesophagus, stomach, small intestine, large intestine and ends at the anus.

Digestion

Digestion is a process that converts nutrients in ingested food.

Mouth

The opening and cavity in the lower part of the human face

Teeth

Plural of tooth which are in the mouth and used to aid chewing

Saliva

Saliva is a clear liquid made by several glands in your mouth area.

Oesophagus

The oesophagus is a muscular tube and connects your mouth to your stomach.

In this topic, we are learning to:

- Describe the simple functions of the basic parts of the digestive system in humans.
- Identify the different types of teeth in humans and their simple functions.
- Construct and interpret a variety of food chains, identifying producers, predators and prey.

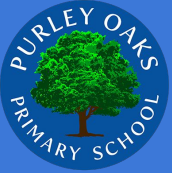
Questions you will know the answers to...

How do we eat food?

What happens to food after it enters our mouth?

What types of food do we eat?

Do all animals eat the same food?



Working Scientifically Assessment Focus:

OBSERVING AND MEASURING.

Make systematic and careful observations and, where appropriate, take accurate measurements using standard units, using a range of equipment, including thermometers and data loggers. Make systematic and careful observations. Use a range of equipment for measuring length, time, temperature and capacity. Use standard units for their measurements.