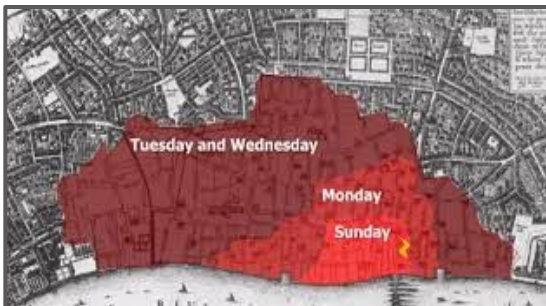
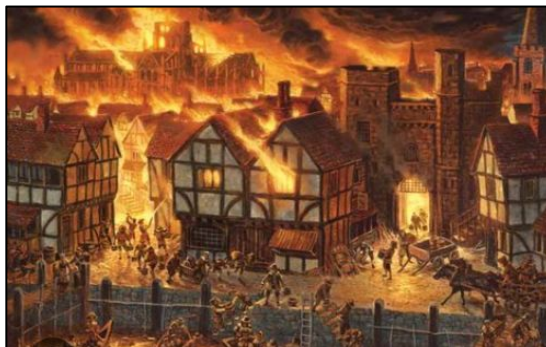


# Key Question: Was London always a cool place?

## *Why was the Great Fire of London so catastrophic?*

### Historical Vocabulary

<b>bakery</b>	a place where bread or cakes are made and sold
<b>London</b>	the capital city of England and the United Kingdom
<b>artefacts</b>	an important man-made historical object
<b>diary</b>	a personal record of life's events
<b>eye-witness</b>	a person who has seen something and can give a description
<b>embers</b>	small pieces of glowing coal or wood in a dying fire
<b>flammable</b>	something that burns easily



In this topic, **we are learning to:**

- explore events beyond living memory that are significant nationally.
- explore significant historical events, people and places in their own locality.
- develop an understanding of how the past impacts our lives today.
- understand primary and secondary resources.

### Timeline

#### Sunday 2nd September 1666

A fire starts in Thomas Farriner's bakery on Pudding Lane, as news of the fire spreads, people run to escape its path.

#### Monday 3rd September 1666

Firefighters try to tackle the fire but it spreads quickly. People carry their possessions to safety using a horse and cart or boats on the River Thames.

#### Tuesday 4th September 1666

Houses are pulled down in an attempt to stop the fire spreading. St Paul's Cathedral is destroyed.

#### Wednesday 5th September 1666

The fire starts to burn more slowly as the wind dies down.

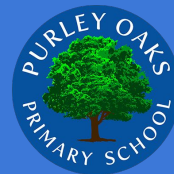
#### Thursday 6th September 1666

The fire is finally under control and put out. People are left homeless.

## 6 questions you will know the answers to...

When did the GFOL happen ?  
Why did the fire start?  
How did the fire spread?

How did the fire stop?  
How do we know about the fire?  
What are the outcomes from the GFoL?



### Assessment Focus:

#### **Chronology**

- Use a range of appropriate words and phrases to describe the past.
- Sequence a set of events in chronological order and give reasons for their order.

#### **Knowledge and Interpretation**

- Recount some interesting facts from an historical event, such as where the 'Fire of London' started.

#### **Enquiry**

- Research about a famous event that happened in Britain and why it happened.
- Explain how the Great Fire of London has impacted on our lives today.